

**OXFORD MAYOR AND COUNCIL  
WORK SESSION  
MONDAY, OCTOBER 19, 2020 – 6:30 P.M.  
CITY HALL (VIA TELECONFERENCE)  
A G E N D A**

1. **Mayor's Announcements**
2. **\*Dried Indian Creek Corridor** – Mayor Eady will lead a discussion on the city's efforts to preserve the city's natural border along Dried Indian Creek.
3. **\*Emory Street Sidewalk Replacement Project** – The FY2021 Capital Budget includes \$100,000 to make repairs to the existing sidewalk that runs along the westside of Emory Street/SR 81 from the city-owned greenspace to Soule Street. At the August Work Session, we discussed installing conduit for pedestrian lighting. We have attached a draft copy of the plans with the conduit shown.
4. **Water Main Replacement Project** – The FY2021 Capital Budget includes \$1,360,000 to replace a 40+ year old section of our water system that serves Oxford Road, Keel Street, and Perry Circle. We were not selected for the 2020 Community Development Block Grant funding for this project. We have the option to re-apply for the 2021 award phase.
5. **Sustainability Committee** – Mayor Eady will discuss the establishment and mission of the city's Sustainability Committee.
6. **African-American History Committee** – Mayor Eady will discuss the establishment and mission of the city's African-American History Committee.
7. **\*Resolution to Adopt Native Planting Lists** – Council will review the resolution to adopt the native plantings list. We have attached draft copies of the proposed resolution and planting list.

\*Attachments

**WORKING DRAFT**  
**Dried Indian Creek Corridor**  
**Protection and Connection Initiative**

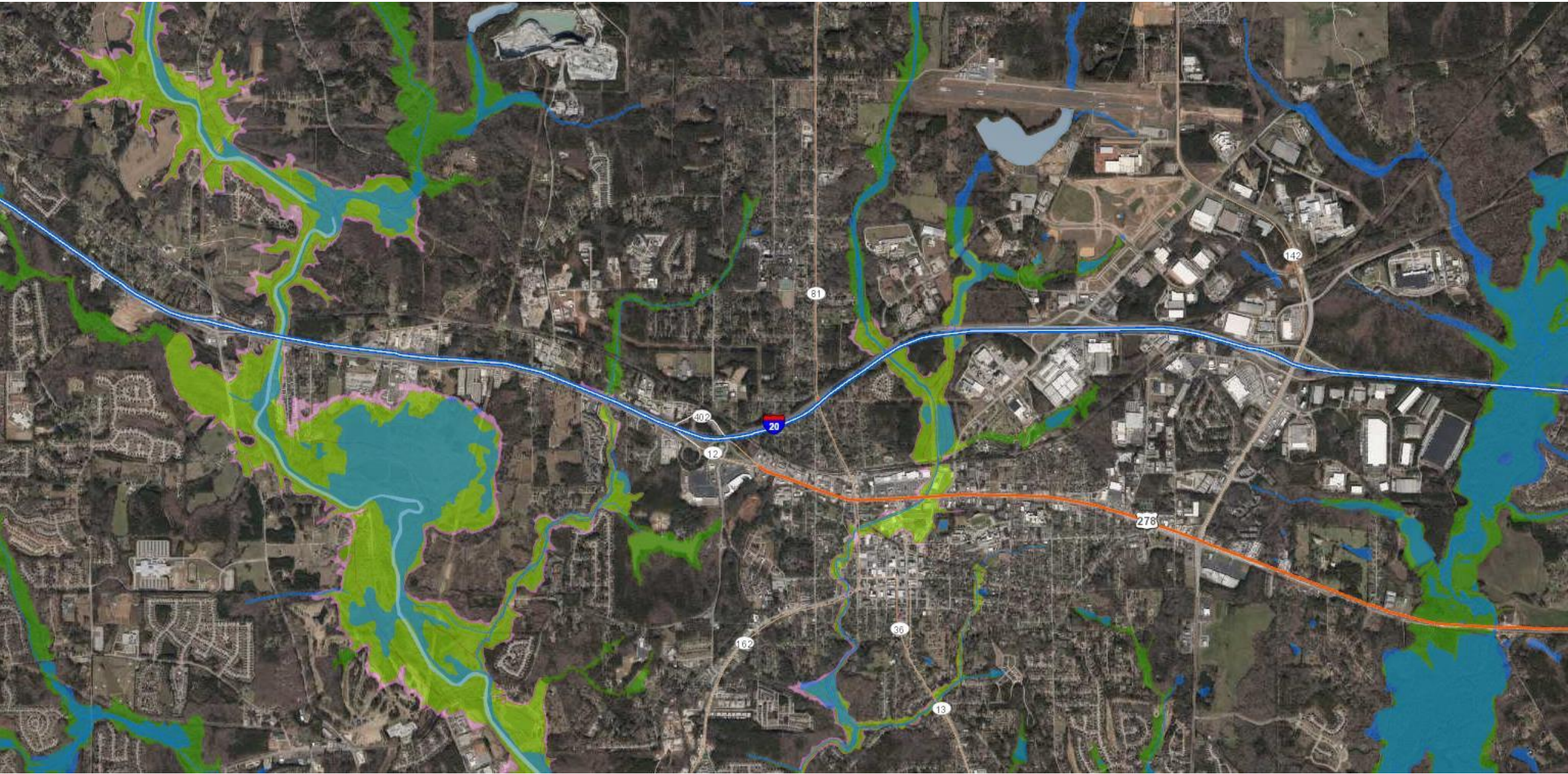
19 October

**David S. Eady**  
**Mayor, City of Oxford**

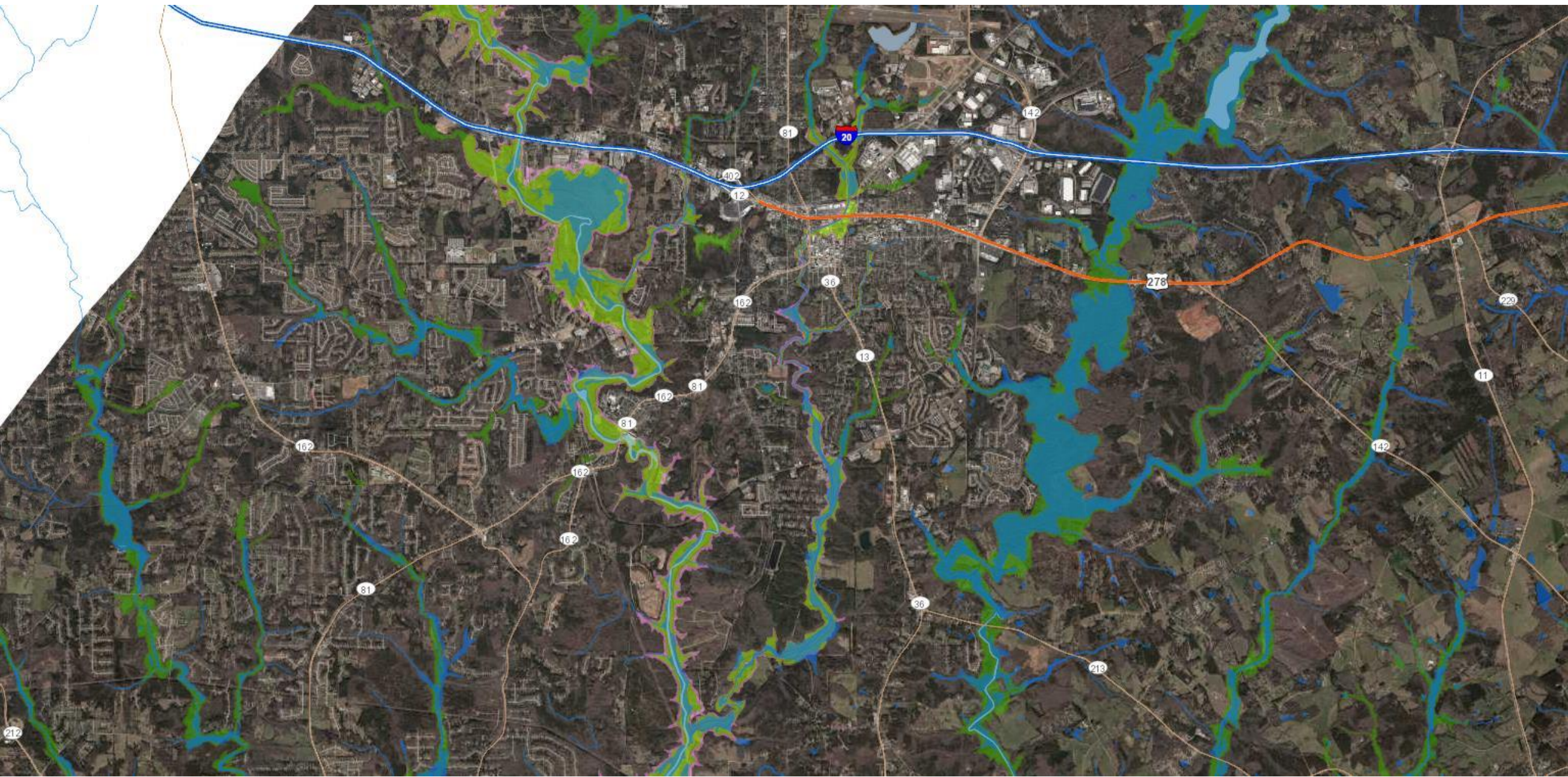
# Scope of the Initiative

- **Dried Indian Creek originates north of Oxford, near the Stone Road soccer fields and Flint Hill Elementary School**
- **After running along Oxford's eastern boundary, the creek passes through Covington and terminates in Yellow River**
- **This initiative covers the entire length of the river corridor, but Oxford is focused on the segment north of I-20**











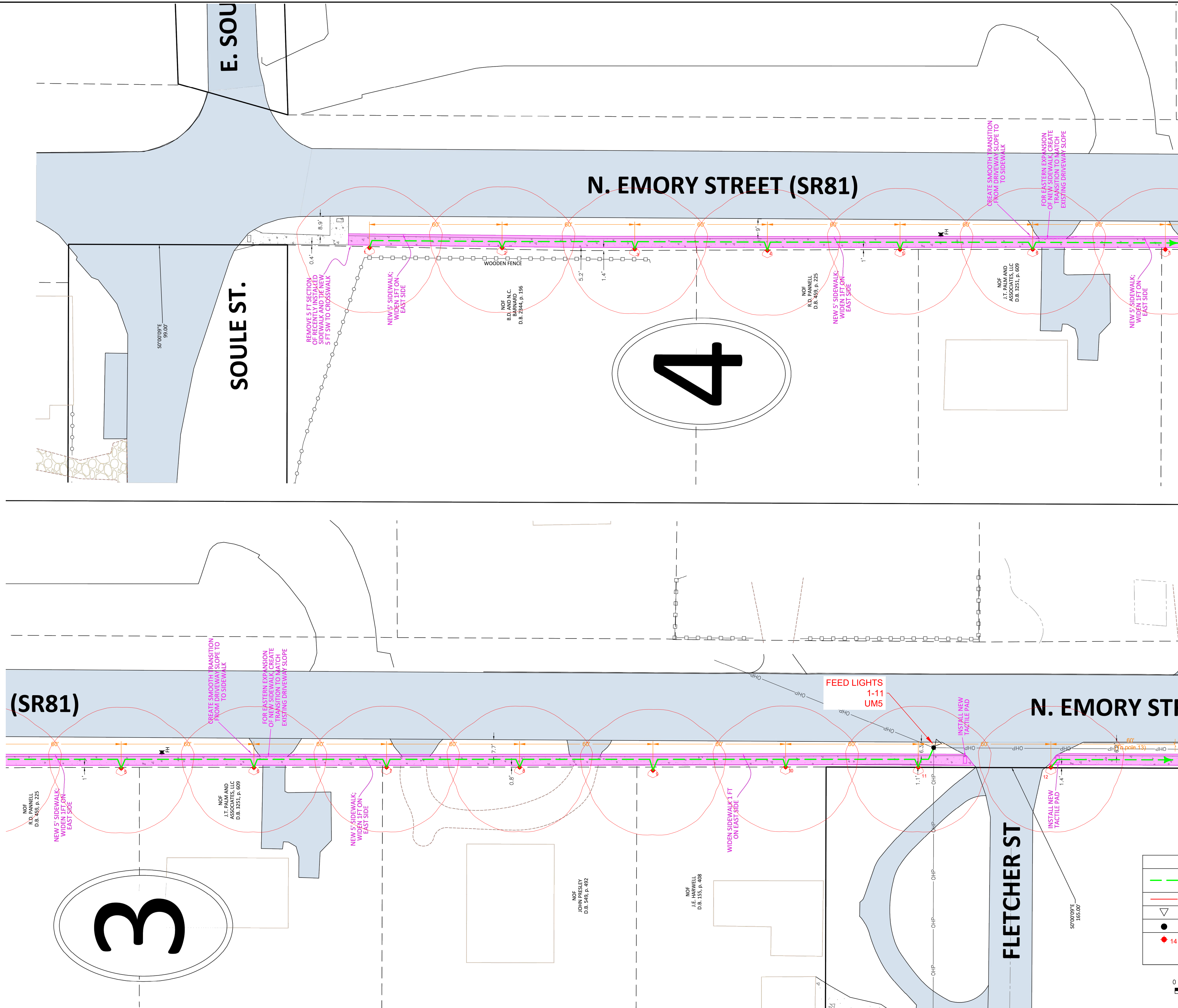
# Objectives

- **Protect the Dried Indian Creek corridor from further degradation through land donations/acquisitions, and conservation easement purchases.**
- **Provide public access to the corridor via an ecologically-sensitive multi-use trail along the land acquired or secured through conservation easements.**
- **Restore ecological structure and functions, to the extent practicable and appropriate, to ensure the long-term health and viability of the Dried Indian Creek corridor.**
- **Learn and share history of the creek and surrounding area**

# Preliminary Task List

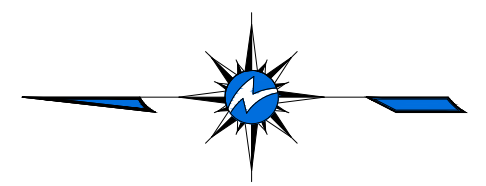
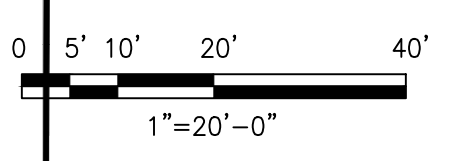
- **Reach out to Covington and Newton County partners and secure City of Covington participation in the portion of the project below I-20.**
- **Work with a land trust to appraise value of land along the creek's riparian zone to estimate funding required to purchase property and/or conservation easements.**
- **Conduct an ecological assessment of the creek corridor to establish a baseline understanding of conditions for which interventions might be needed.**
- **Create a concept plan to illustrate the potential to protect the creek ecosystem and connect Oxford, Covington, and Newton County residents to and through this corridor**
- **Prepare and submit grant application for DNR funding to acquire land/easements, restore ecosystem services, and construct adjacent trails—most likely phased with different creek corridor segments to manage costs and implementation complexity.**
- **Develop a creek/riparian corridor restoration and protection plan to restore ecological structure and functions; integrate public access via low-impact, multi-use trails.**
- **Implement the plan in partnership and coordination with other stakeholders.**

\\ecg\ecg-4001\DATA\KAW\SHARES\EGCAD\PROJECTS\OXFORD\PROJECTS\1902 IN EMERY, SW - LIGHTING DESIGN\1481902R10.DWG, Printed on: 10/15/2020, 5:43 PM by: RWD/PFS



**LEGEND**

	INSTALL 1-1/4" ROLL CONDUIT W/ #4 TPX U.G.
	INSTALL #2 O.H. TPX
	EXISTING O.H. XFMR
	EXISTING WOOD POLE
	INSTALL LIGHT FIXTURE 75 WATT LED FIXTURE 240 VOLTS

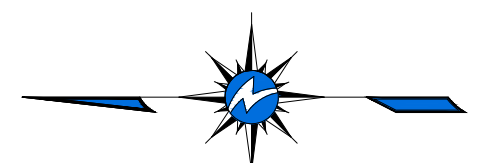
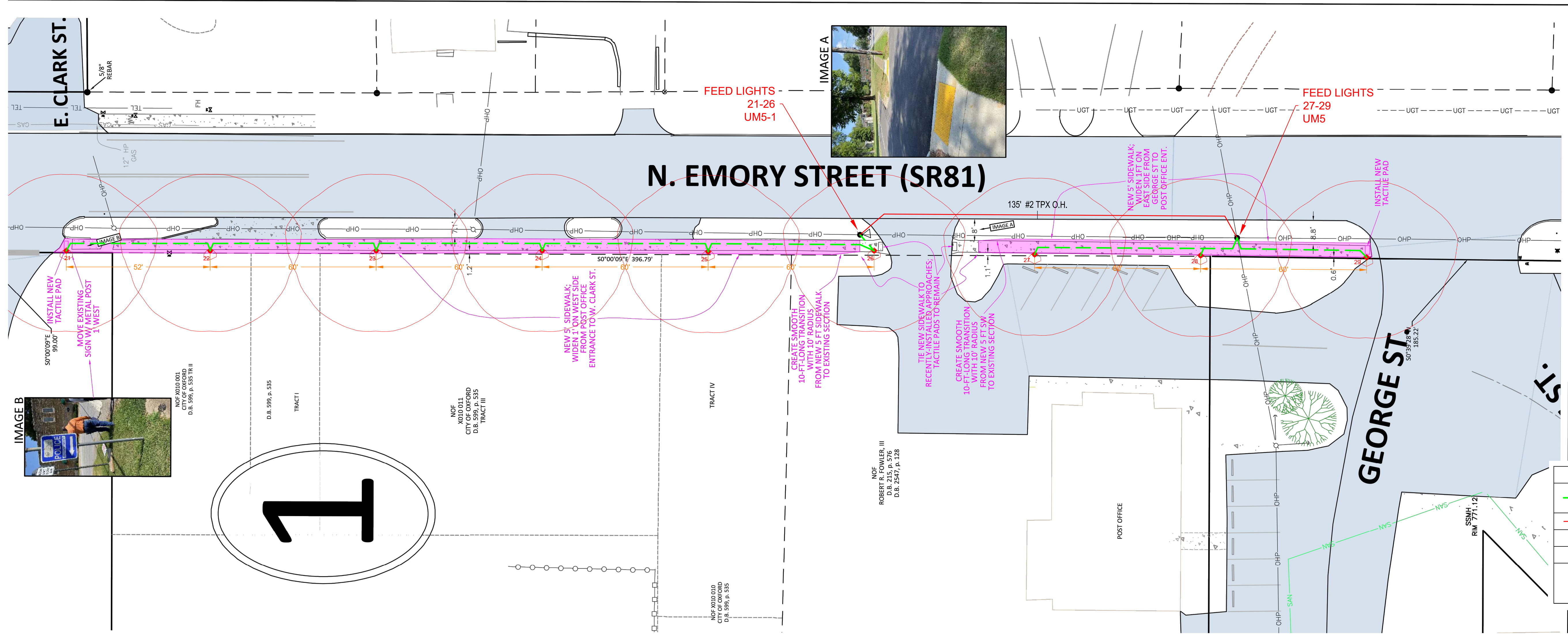
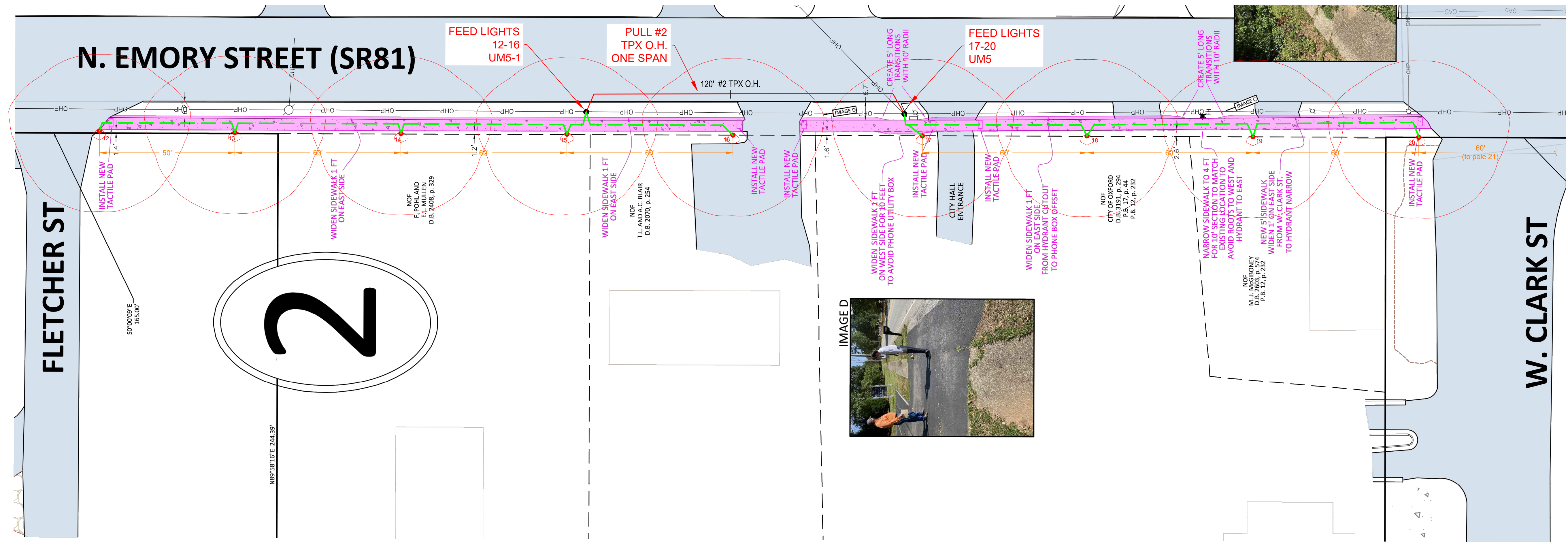


CITY OF OXFORD  
 PROPOSED 5-FT CONCRETE SIDEWALK PLAN  
 LIGHTING DESIGN PLAN (75 WATT FIXTURES)  
 NORTH EMORY STREET - NEWTON COUNTY  
 ELECTRICAL DISTRIBUTION SERVICES

Engineer: G. Lee	Drafter: D. Koppes
Date: 10/15/20	Scale: 1:20
Drawing No.: 481902R10	Sheet No.: 1 of 2

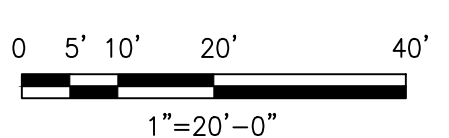


\\ecg08r-4001\DATA\KAW\SHARES\EGG\CAD\PROJECTS\OXFORD\PROJECTS\1902 IN EMORY, SW - LIGHTING DESIGN\1481902R10.DWG, Printed on: 10/15/2020, 5:43 PM by D:\P\EF



Know what's below.  
Call before you dig.

LEGEND	
	INSTALL 1-1/4" ROLL CONDUIT W/ #4 TPX U.G.
	INSTALL #2 O.H. TPX
	EXISTING O.H. XFMR
	EXISTING WOOD POLE
	INSTALL LIGHT FIXTURE 75 WATT LED FIXTURE 240 VOLTS



CITY OF OXFORD  
 PROPOSED 5-FT CONCRETE SIDEWALK PLAN  
 LIGHTING DESIGN PLAN (75 WATT FIXTURES)  
 NORTH EMORY STREET - NEWTON COUNTY  
 ELECTRICAL DISTRIBUTION SERVICES

Engineer: G. Lee	Drafter: D. Koppes
Date: 10/15/20	Scale: 1:20
Drawing No.: 481902R10	Sheet No.: 2 of 2



# CITY OF OXFORD

## RESOLUTION

**WHEREAS**, the Mayor and Council of the City of Oxford deem it in the best interest of the government and the residents of the City to require that all city-owned and controlled property be landscaped with native vegetation; and

**WHEREAS**, the Mayor and Council of the City of Oxford, pursuant to Chapter 38: Vegetation; Article I: In General: Section 38-2: Native Vegetation, may periodically, from time to time, promulgate a City of Oxford Approved Planting List, which shall be adopted by resolution, and a copy of such current listing maintained at City Hall; and

**NOW, THEREFORE, BE IT RESOLVED**, that the Mayor and Council of the City of Oxford by this resolution do hereby adopt the City of Oxford Approved Planting List attached hereto.

Adopted this second day of November, 2020.

BY:

---

David S. Eady, Mayor

ATTEST:

---

Marcia Brooks, City Clerk

SEAL



# City of Oxford Approved Planting List

## A. Canopy Trees

<i>Common Name</i>	<i>Botanical Name</i>
Red Maple	Acer rubrum
River birch	Betula nigra
Hickories	Carya ovata, C. tomentosa, C. Ovalis
Black Walnut	Juglans nigra
Sugarberry	Celtis laevigata
Persimmon	Diospyros virginiana
American Beech	Fagus grandifolia
Sweetgum	Liquidambar styraciflua
Tulip Poplar	Liriodendron tulipifera
Black Gum	Nyssa sylvatica
Eastern Red Cedar	Juniperus virginiana
Loblolly Pine	Pinus taeda
Short Leaf Pine	Pinus echinata
Virginia Pine	Pinus virginiana
Sycamore	Platanus occidentalis
White Oak	Quercus alba
Scarlet Oak	Q. coccinea
Southern Red Oak	Q. falcata
Overcup Oak	Q. lyrata
Post Oak	Q. stellata
Swamp Chestnut Oak	Q. michauxii Chesnut
Oak	Q. prinus
Shumard Oak	Q. shumardii
Water Oak	Q. nigra
Willow Oak	Q. phellos
Black Willow	Salix nigra
Elm	Ulmus rubra, U. alata, U. americana

## B. Understory Trees

<i>Common Name</i>	<i>Botanical Name</i>
Southern Sugar Maple	Acer barbatum
Serviceberry	Amelanchier canadensis
Pawpaw	Asimina triloba
Ironwood	Carpinus caroliniana
Eastern Redbud	Cercis canadensis
Flowering Dogwood	Cornus florida
Cockspur Hawthorn	Craetagus crus-galli

Parsley Hawthorn  
Green Hawthorn  
Washington Hawthorn  
Carolina Silverbell  
American Holly  
Big-leaf Magnolia  
Umbrella Magnolia  
Hophornbeam  
Sourwood  
Georgia Oak  
Sassafras  
Crabapple

Craetagus marshalii  
Craetagus viridis  
Craetagus phaenopyrum  
Halesia carolina  
Ilex opaca  
Magnolia macrophylla  
Magnolia tripetala  
Ostrya virginiana  
Oxydendrum arboreum  
Quercus georgiana  
Sassafras albidum  
Malus angustifolia

### C. Shrubs

#### *Common Name*

Buckeye  
Tag Alder  
Red Chokeberry  
Sweet shrub  
American Beautyberry  
Buttonbush  
Sweet Pepperbush  
Silky Dogwood  
American Strawberry Bush  
Witchhazel  
Wild Hydrangea  
Oakleaf Hydrangea  
Possumhaw  
Winterberry  
Itea, Virginia Sweetspire  
Spice Bush  
Chickasaw and Hog Plum  
Wild Plum  
Piedmont Azalea  
Oconee Azalea  
Smooth or Winged Sumac  
Elderberry  
Maple-leaf Viburnum  
Swamphaw Viburnum  
Arrowwood  
Blackhaw Viburnum

#### *Botanical Name*

Aesculus sylvatica, A. parviflora, A. pavia  
Alnus serrulata  
Aronia arbutifolia  
Calycanthus floridus  
Callicarpa americana  
Cephalanthus occidentalis  
Clethra alnifolia  
Cornus amomum, C. foemina  
Euonymus americanus  
Hamamelis virginiana  
Hydrangea arborescens  
Hydrangea quercifolia  
Ilex decidua  
I. verticillata  
Itea virginica  
Lindera benzoin  
Prunus angustifolia, P. umbellata  
P. americana  
Rhododendron canescens,  
Rhododendron flammeum  
Rhus glabra, R. copallinum  
Sambucus canadensis  
Viburnum acerifolium  
Viburnum nudum, V. cassinoides  
Viburnum dentatum  
Viburnum prunifolium



Hazelnut  
NineBark  
Mayhaw  
Devil's Walkingstick  
Littlehip Hawthorne  
Strawberry Bush  
Drooping Leucothoe  
Hoptree\Wafer-Ash  
American Bladdernut  
American Snowbell  
Sparkleberry  
Yellow-Root

Corylus Americana  
Physocarpus opulifolius  
Crataegus aestivalis  
Aralia spinosa  
Crataegus spathulata  
Euonymus americanus  
Leucothoe fontanesiana  
Ptelea trifoliata  
Staphylea trifolia  
Styrax americanus, S. gradifolius  
Vaccinium arboretum  
Xanthorhiza simplicissima

#### **D. Ground layer Plants**

##### ***Common Name***

##### **Ferns**

Southern Lady Fern  
Sensitive fern  
Cinnamon fern  
Royal fern  
Christmas fern  
Southern Chain fern  
Swamp Fern

##### **Flowering Perennials**

Swamp Milkweed  
Butterflyweed  
New England Aster  
Turtlehead  
Coreopsis  
Hardy ageratum  
Joe-Pye Weed  
Wild Geranium  
Narrow-leaved sunflower  
Hibiscus (not shrub althea)  
Gayfeather  
Cardinal Flower  
Great Lobelia  
Partridgeberry  
Evening Primrose  
Obedient Plant  
Solomon's Seal

##### ***Botanical Name***

Athyrium filix-femina  
Onoclea sensibilis  
Osmunda cinnamomea  
Osmunda regalis  
Polystichum acrostichoides  
Woodwardia aereolata  
Thelypteris palustris  
  
Asclepias incarnata  
Asclepias tuberosa  
Aster novae-angliae  
Chelone glabra Lanceleaved  
Coreopsis lanceolata  
Eupatorium coelestinum  
Eupatorium fistulosum  
Geranium maculatum  
Helianthus angustifolius  
H. moscheutos  
Liatris spicata, L. aspera  
Lobelia cardinalis  
Lobelia siphilitica  
Mitchella repens  
Oenothera speciosa, O. fruticosa  
Physostegia virginiana  
Polygonatum biflorum

Black-Eyed Susan	Rudbeckia hirta
Cutleaf Coneflower	Rudbeckia lacinata
False Solomon's Seal	Smilacina racemosa
Goldenrod	Solidago spp. (look for clumping species)
Stoke's Aster	Stokesia laevis
Foamflower	Tiarella cordifolia
Spiderwort	Tradescantia virginiana
Ironweed	Vernonia noveboracensis
Yellow-root	Xanthorhiza simplicissima

#### **E. Emergents for Wetland/Bog Areas**

**(Not Applicable for most Buffer Re-vegetation)**

<i>Common Name</i>	<i>Botanical Name</i>
Blue-flag Iris	Iris virginica, I.versicolor
Soft Rush or native rushes	Juncus effuses
Arrow Arum	Peltandra virginica
Pickernelweed	Pontederia cordata
Arrowhead-Duck Potato	Sagittaria latifolia
Lizardtail	Saururus cernuus
Bulrush	Scirpus validus
Fire Flag	Thalia dealbata

#### **F. Grasses and Grass-like Plants (from seed, plug, or pot)**

<i>Common Name</i>	<i>Botanical Name</i>
Autumn bentgrass	Agrostis perennans
Broomsedge	Andropogon virginicus, A. ternarius
River cane	Arundinaria gigantea
Tussock sedge	Carex stricta (and other native Carex)
River oats	Chasmanthium latifolium
Wood oats	Chasmanthium sessiliflorum
Virginia wildrye	Elymus virginicus
Leathery rush	Juncus coriaceus
Soft rush	Juncus effusus
Path rush	Juncus tenuis
Beaked panic grass	Panicum anceps
Red-Topped Panic Grass	Panicum rigidulum
Switchgrass	Panicum virgatum
Indian grass	Sorghastrum nutans
Purple top	Tridens flavus
Eastern Gammagrass	Tripsacum dactyloides



**G. Invasive Plant list (Species that shall not be used)**

<i>Common Name</i>	<i>Botanical Name</i>
Tree-of-heaven	Ailanthus altissima (P. Mill.)
Devil's Horsewhip/ Chaff flower	Achyranthes aspera
Mimosa	Albizia julibrissin Durazz.
Alligator weed	Alternanthera philoxeroides (Mart.) Griseb.
Porcelain berry	Ampelopsis Brevipedunculata
Oriental bittersweet	Celastrus orbiculatus Thunb.
Chinese yam	Dioscorea oppositifolia
Water hyacinth	Eichhornia crassipes
Thorny olive	Elaeagnus pungens Thunb.
Autumn-olive	Elaeagnus umbellata Thunb.
Ground Ivy	Glechoma hederacea
Japanese hops	Humulus japonicus
English ivy	Hedera helix
Hydrilla	Hydrilla verticillata (L. f.)
Shrubby lespedeza	Lespedeza bicolor Turcz.
Sericea lespedeza	Lespedeza cuneata (Dum.-Cours.)
Chinese privet	Ligustrum sinense Lour.
Waxleaf privet	Ligustrum japonicum
Japanese honeysuckle	Lonicera japonica Thunb.
Herder Amur honeysuckle	Lonicera maackii (Rupr.)
Winter honeysuckle	Lonicera fragrantissima
Japanese climbing fern	Lygodium japonicum (Thunb. ex Murr.)
Chinaberry	Melia azedarach
Nepalese browntop	Microstegium vimineum (Trin.)
Marsh dayflower	Murdannia keisak (Hassk.) Hand.-Maz.
Heavenly bamboo	Nandina domestica
Bradford (Callery) Pear	Pyrus calleryana (any cultivar)
Princesstree	Paulownia Tomentosa (Thunb.) Sieb. &
Zucc. ex Steud. Golden bamboo	Phyllostachys aurea Carr. ex A.& C. Rivière
Japanese knotweed	Polygonum cuspidatum Siebold & Zucc.
Kudzu	Pueraria montana var. lobata (Lour.) Merr.
Multiflora rose	Rosa multiflora Thunb. ex Murr.
Small Chinese tallowtree	Triadica sebifera (L.)
Big periwinkle	Vinca major L.
Common periwinkle	Vinca minor L.
Chinese wisteria	Wisteria sinensis (Sims) DC.
Japanese wisteria	Wisteria floribunda